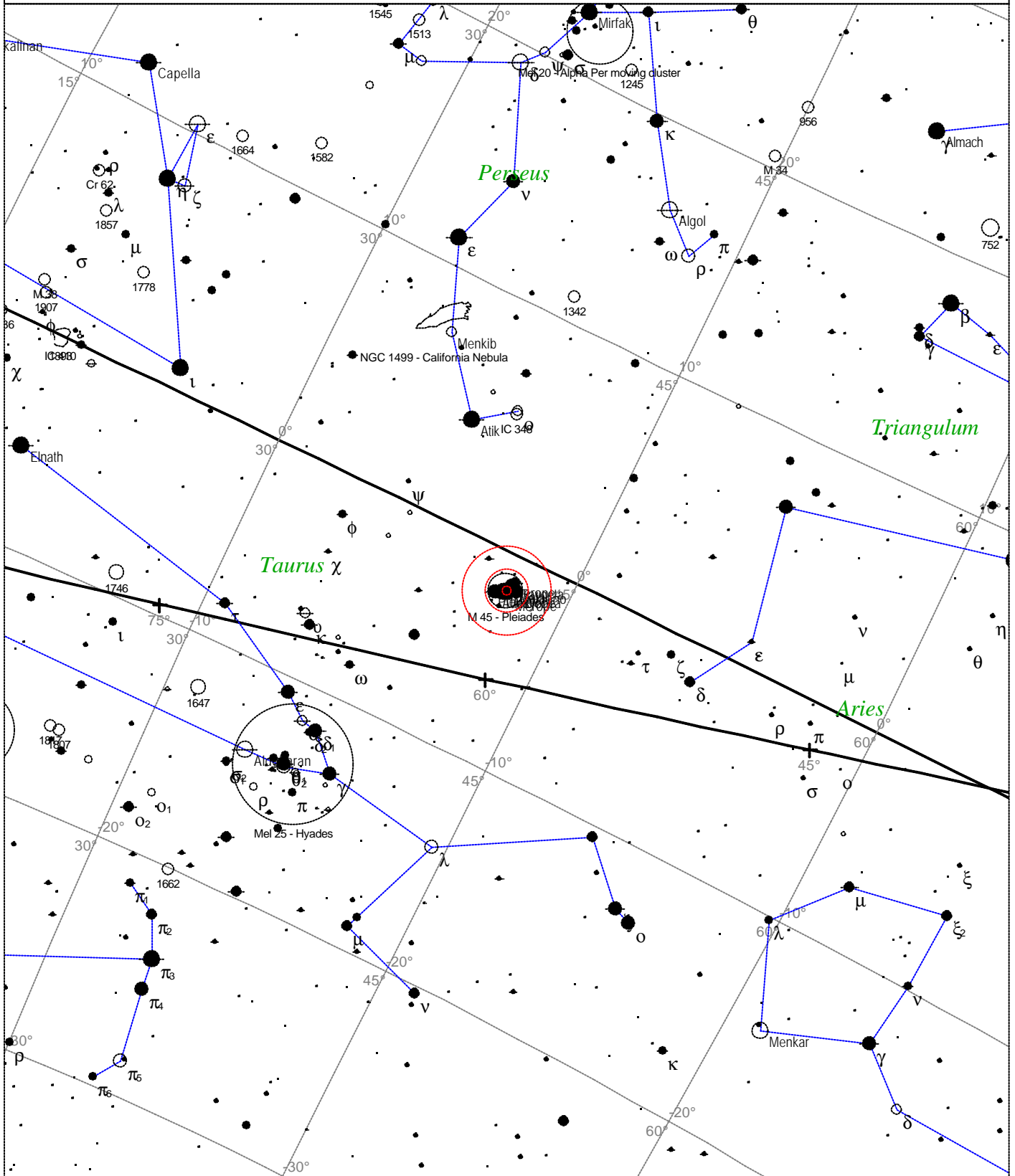


# Messier 45 - Pleiades



|  |  |   |  |   |
|--|--|---|--|---|
| <p><b>STARS</b></p> <ul style="list-style-type: none"> <li>● &lt;3</li> <li>● 3.5</li> <li>● 4</li> <li>● 4.5</li> <li>● 5</li> <li>● 5.5</li> </ul> | <p><b>SYMBOLS</b></p> <ul style="list-style-type: none"> <li>● Multiple star</li> <li>○ Variable star</li> <li>☄ Comet</li> <li>☾ Galaxy</li> <li>□ Bright nebula</li> </ul> | <p><b>SYMBOLS</b></p> <ul style="list-style-type: none"> <li>□ Dark nebula</li> <li>⊕ Globular cluster</li> <li>○ Open cluster</li> <li>⊕ Planetary nebula</li> <li>⊗ Quasar</li> </ul> | <p><b>SYMBOLS</b></p> <ul style="list-style-type: none"> <li>△ Radio source</li> <li>× X-ray source</li> <li>○ Other object</li> </ul> | <p><i>Messier 45 - Pleiades</i><br/> <i>Type of object: Bright nebula</i><br/> <i>Magnitude: 1.2</i><br/> <i>Size: 100.0'</i><br/> <i>Right ascension: 3h 47m 9s</i><br/> <i>Declination: +24° 7' 29"</i><br/> <i>Constellation: Taurus</i></p> |
|--|--|---|--|---|

Local Time: 19:40:11 12-Sep-2002  
 Location: 53° 27' 0" N 2° 31' 0" W

UTC: 19:40:11 12-Sep-2002  
 RA: 3h47m09s Dec: +24° 07' Field: 45.0°

Sidereal Time: 18:56:39  
 Julian Day: 2452530.3196